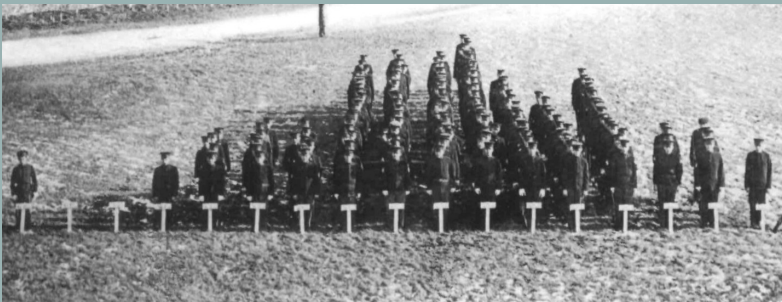


# EDGECUTTER WORKSHOP

19th October 2015, Royal Statistical Society, London

## Hidden Complexities in Complex Traits and Genome-Wide Associations



1	0	0	1	5	7	7	22	25	26	27	17	11	17	4	4	1
4:10	4:11	5:0	5:1	5:2	5:3	5:4	5:5	5:6	5:7	5:8	5:9	5:10	5:11	6:0	6:1	6:2

Reproduced from A. Blakeslee, *J Hered* (1914) 5 (11): 511-518 with permission (Oxford University Press)

Genetics promises to help us understand the underlying evolutionary structure of complex traits and so give insight into the heritable component of many important diseases.

However, scientific advances have remained incremental which suggests that current methodology is limited. Improved statistical methods and modelling will be key to making the most of existing data and preparing for the next generation of data.

This workshop aims to bring together experts on the methodology underpinning the analysis of complex traits and their relationship to genetics and biological function. The focus will be at the cutting edge of the statistical analysis of complex traits data, its associated practical interpretation and the benefits to society at large.

### INVITED SPEAKERS

Jeffrey Barrett, Sanger Institute

Heather Cordell, University of Newcastle

Gibran Hemani, University of Bristol

Kirk Lohmueller, University of California

Gilean McVean, University of Oxford

Nuala Sheehan, University of Leicester

Chris Spencer, Centre for Human Genetics

Eleftheria Zeggini, Sanger Institute



*Organised by:*

Dan Lawson

Mark Beaumont

Nic Timpson



**REGISTRATION / INFO: [www.sustain.bris.ac.uk/ws-hidden](http://www.sustain.bris.ac.uk/ws-hidden)**

